

Travel to [Aikido in Fredericksburg](#) from afar

Thanks for planning to participate in a program at Aikido in Fredericksburg. Although we are located in a rural area, we are just 1.4 miles off of US Route 1 and 4 - 6 miles off I-95 (between exits 118 and 126) . The street address is 6155 Hickory Ridge Road, Spotsylvania, VA 22551 USA. [Google Maps](#) works well.

Planes (Airports)

There are several airports you might consider if you are flying in the area:

- Richmond International (RIC) – about 50 miles away about a 50 minute drive. The easiest drive but not always the best airline connections or fares.
- Washington National (DCA) – about 60 miles away and a 1 – 1.5 hour drive depending on traffic. It is possible to get to the [VRE commuter rail](#) which can take you to Fredericksburg or Spotsylvania. There is a [Metro](#) stop there too which can take you into DC.
- Washington Dulles (IAD) – about 70 miles away and 1.5 – 2 hour drive depending on traffic.
- Baltimore Washington International (BWI) – about 95 miles away and a 2 – 2.5 hour drive depending on traffic. [Amtrak](#) stops there which can take you to Fredericksburg.

Note that traffic to and from the DC area is highly dependent on commuters so you can expect slow going if you travel during commuting hours, especially Friday afternoons. If you have an [E-ZPass](#) you can sometimes pay to go faster.

Trains

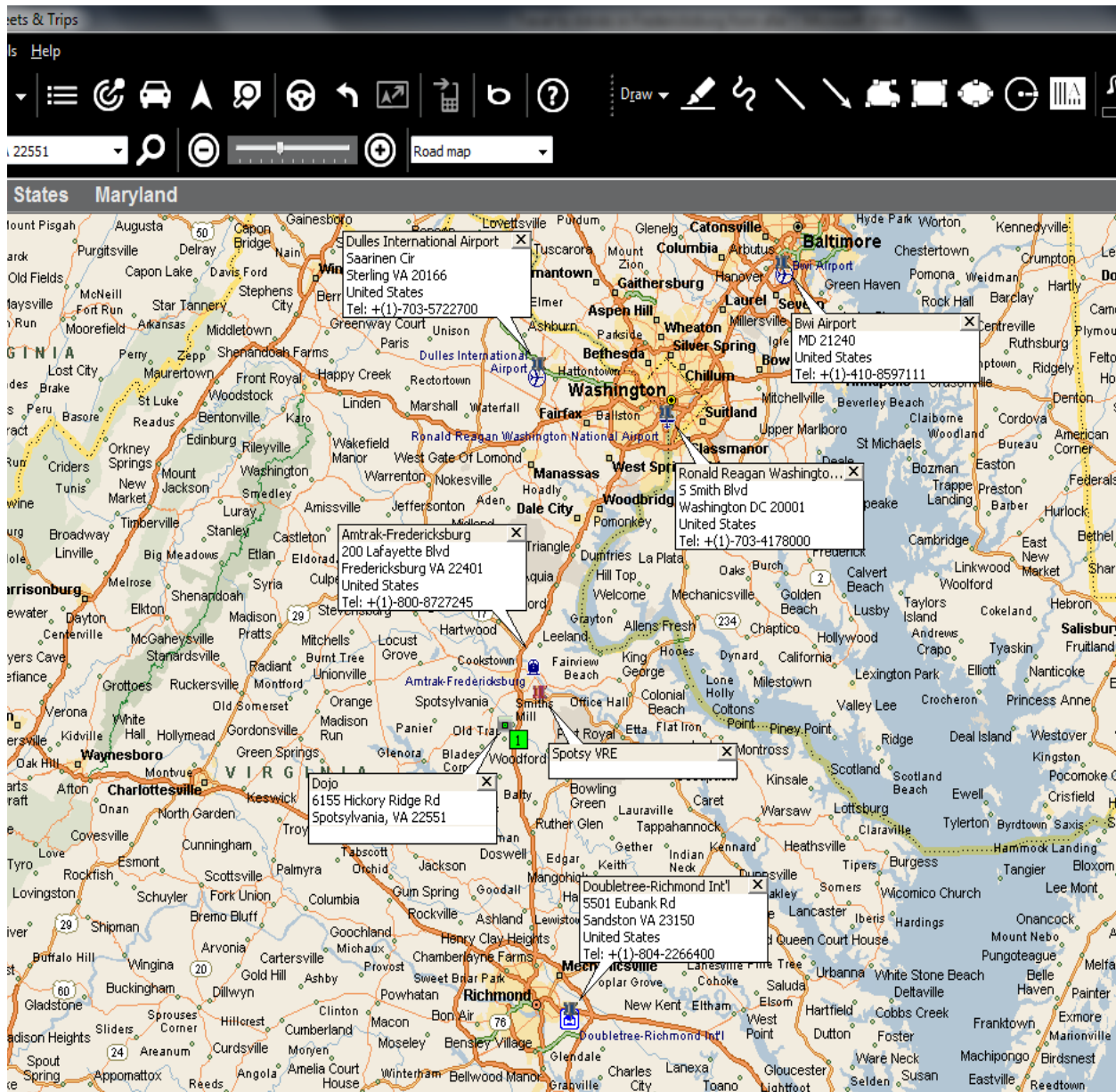
- [Amtrak](#) and some Busses stop in Fredericksburg. About fourteen miles away, about a 25 minute drive. With advance arrangement we may be able to pick you up.
- The [Virginia Rail Express](#) (commuter rail) stops in Fredericksburg and Spotsylvania. About ten miles away, about 15 minute drive. With advance arrangements we should be able to pick you up. Note that it only travels during commuting hours.

Automobiles

- If you will be here for a short stay you generally would not need a vehicle. We can help with local transport to/from shopping.
- If you will be here for a long stay you may be happier if you are more mobile. We have parking onsite at the Dojo if you have your own vehicle. Cars can be rented at any of the area airports and short-term rentals are possible about ten miles away.
- Unfortunately the roads are not great for walking or bicycling but we do have bike parking onsite.
- Electric cars can be plugged in via 110/120V in front of the dojo if you have a charger with a long cable. Arrangements can be made for 240V Level 2 charging upon request.

Still need more info?

Just contact us: aviv@aikidoinn.com * 540.582.9600



Housing

We have several uchideshi rooms/beds which should be reserved in advance. On the mat (or couch) sleeping can be arranged with a nightly donation. There are showers and a kitchen at the Dojo. Homestays may be possible if arranged in advance.

We have had good experience with a nearby hotel (six miles) that offers good rates and includes breakfast (ask for the Aikido rate when calling in for a reservation):

[Sleep Inn Southpoint](#)

5400 Southpoint Boulevard, Fredericksburg, VA, 22407 US

Phone: (540) 710-5500 Fax: (540) 710-1572